



Carbon Reduction Plan

Supplier name: **Colas Rail UK Limited**

Publication date: 03/09/2021

Commitment to achieving Net Zero

Colas Rail UK Limited is committed to achieving Net Zero emissions by **2050** for their UK Operations.

Baseline Emissions Footprint

Baseline emissions are a record of the greenhouse gases that have been produced in the past and were produced prior to the introduction of any strategies to reduce emissions. Baseline emissions are the reference point against which emissions reduction can be measured.

Baseline Year: 2019	
Additional Details relating to the Baseline Emissions calculations.	
<i>The baseline emissions are from our annual reporting to Colas Group France. Whilst our X-Fi system calculates our scope 1 and 2 emissions we are currently trying to improve the accuracy of the data. Scope 3 emissions are work in progress.</i>	
Baseline year emissions:	
EMISSIONS	TOTAL (tCO₂e)
Scope 1	35759
Scope 2	791
Scope 3 (Included Sources)	Not yet calculated
Total Emissions	36551 (scope 1 and 2 total)



Current Emissions Reporting

Reporting Year: 2020	
EMISSIONS	TOTAL (tCO ₂ e)
Scope 1	20216
Scope 2	702
Scope 3 (Included Sources)	Not yet calculated
Total Emissions	20918

The emissions for 2020 were abnormally low due to COVID but we expect our typical emissions to increase as Covid effects decrease.

Emissions reduction targets

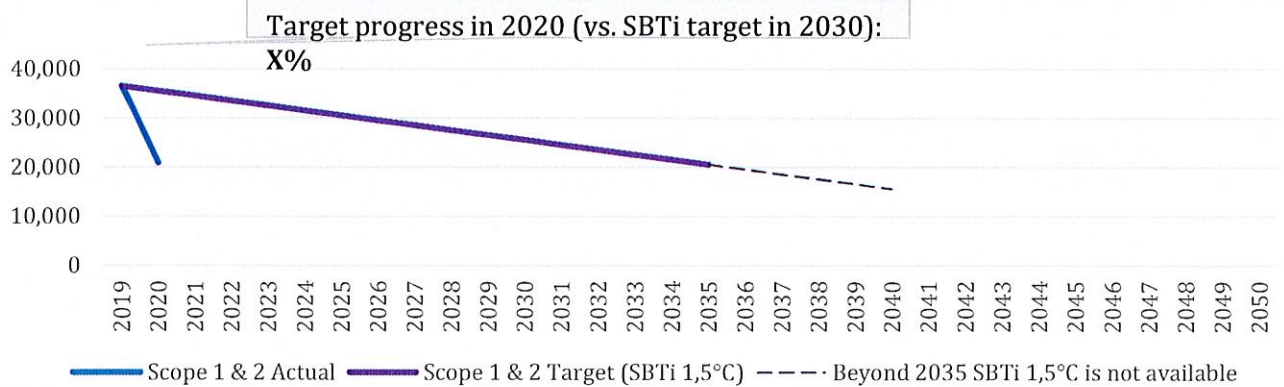
Colas Group (France) have set reduction targets of 30% reduction in scope 1, 2 and 3a by 2030.

Colas Rail UK will be signing up to Science Based targets on a well below 2°C pathway.

Scope 3 emissions have not yet been calculated but Colas Rail UK are aware of the need to do this and this is in progress. The following categories will be included in our scope 3 emission reductions in compliance with the PPN 06:

- Business travel
- Employee commuting
- Waste generated in operations
- Upstream transportation and distribution
- Downstream transportation and distribution (not applicable to Colas Rail UK)

PPN6 - Carbon Reduction: Projection vs. Actual Scope 1 & 2 (SBTi 1,5°C):



Please note that despite our operations continuing during COVID there was a significant reduction in business travel and other aspects as a result and therefore the actual in 2020 does not provide an accurate picture of where we are. We expect our emissions to increase again during 2021 to the projected line rather than continue the downward trend as shown by the actual line. The projected line shows an annual 3.0% annual linear reduction in our scope 1 and 2 carbon emissions from a 2019 baseline.

Carbon Reduction Projects

Completed Carbon Reduction Initiatives

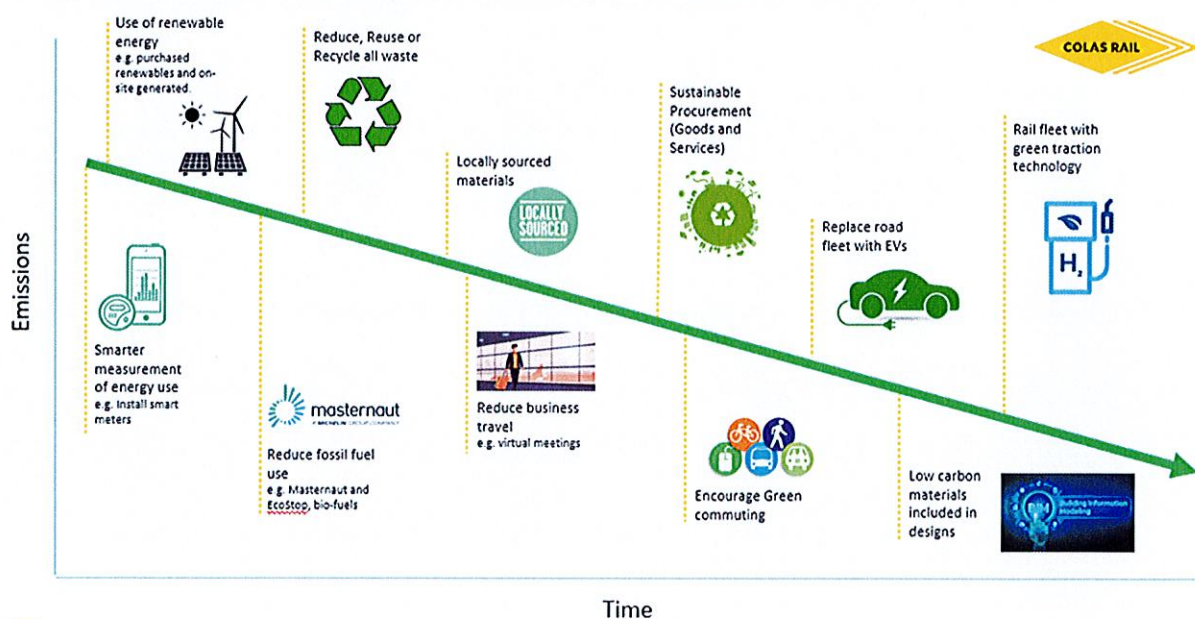
The following environmental management measures and projects have been completed or implemented since the 2019 baseline. The carbon emission reduction achieved by these schemes equate to **268.5 tCO₂e**, a **1 %** reduction against the 2019 baseline and the measures will be in effect when performing the contract

- Colas Group have developed a new CSR and Carbon and Biodiversity Strategy
- Colas Rail are certified to ISO 14001:2015 and recertification was gained in 2021
- Colas Rail have set up a monthly Carbon Working Group (start of 2021) to drive carbon emission reductions across the business
- Appointment of Carbon Champions has been made within each business unit.
- Colas Rail UK have restricted company cars to electric (EV) and plug-in hybrid (PHEV) cars only with 61% of company cars now being EV/PHEV. 13 charging points have been installed at Colas Rail UK operational sites. An additional 4 are to be installed by end of 2021. Parking facilities have been removed from city centre offices to encourage more sustainable travel options.
- Cycle-to-work scheme has been introduced with almost 100 staff taking up the option to date
- Fossil free worksites – 'Site of the Future' trial achieved a 97% diesel free site over a weekend of working setting a precedent for diesel free worksites
- Reduction of fuel usage through active monitoring of speed, acceleration and vehicle idling using Masternaut telematics
- Converting to electronic work packs on operational sites (e-Pic) and in Procurement for supplier/contract documentation.

- Removing single-use plastic water bottles from operational sites and either replacing with plant based bottles or using water coolers with large, reusable bottles.
- Changeover of plastic packaging to cardboard sleeves on new Personal Protective Equipment
- Business travel (air and rail) reductions in 2020 due to Covid.
- Senior manager approval introduced for air travel and only approval where equivalent train journeys do not exist or flying is the only practicable option
- A train driver simulator developed to negate the need for actual driver training on site
- Use of 'Papercut' printing system to reduce paper use and toner
- Sustainable Procurement policy produced to encourage collaboration from our value chain
- Trial of composite plastic sleepers (made of locally sourced waste plastics) to replace timber or concrete sleepers.
- Waste diversion from landfill has exceeded 98% in 2020
- All fleet vehicles are Euro VI emission compliant

In the future we hope to implement further measures

The diagram below shows our areas to target for carbon emission reductions going forward, rail fleet technology being the longest-term initiative due to adequate technology not yet being available and not anticipated in the short/medium term.



- Creation of a new role and appointment of Carbon and Energy Manager
- Business case being produced for ISO 50001 and PAS 2080 within our Infrastructure Division
- Recycling of all PPE as opposed to incineration as currently happens
- 'Site of the Future' becoming commonplace as supply of new technology equipment and machines increases to meet demand.
- Site welfare cabins and facilities to be renewable technology and fossil fuels will be used only as a last resort (solar technology, battery and LED technology)
- We will work with our client for approval to extend the trial site and install plastic composite sleepers on all suitable renewable sites



- Promote continued remote working for a percentage of the working week and encourage digital communications wherever possible.
- Use of the Sustainable travel hierarchy for all business travel
- Create a supply chain carbon reduction plan
- Establish Colas Rail Working Group with Procurement and Business Unit delivery teams to create and manage the carbon reduction plan within the Supply chain
- Develop a plan to replace existing road fleet with EVs as options come to market. Install infrastructure to aid the process.
- Install smart meters in all properties
- Fuel measurement technology on our locomotive/On-Track Machine fleets
- Complete Masternaut vehicle telemetry on our road vehicles (98% complete)
- Continue alternative fuel trials in freight (LPG dual fuel/Hydrotreated Vegetable Oil and Solid Oxide Fuel Cell technology)

Declaration and Sign Off

This Carbon Reduction Plan has been completed in accordance with PPN 06/21 and associated guidance and reporting standard for Carbon Reduction Plans.

Emissions have been reported and recorded in accordance with the published reporting standard for Carbon Reduction Plans and the GHG Reporting Protocol corporate standard¹ and uses the appropriate Government emission conversion factors for greenhouse gas company reporting².

Scope 1 and Scope 2 emissions have been reported in accordance with SECR requirements, and the required subset of Scope 3 emissions have been reported in accordance with the published reporting standard for Carbon Reduction Plans and the Corporate Value Chain (Scope 3) Standard³.

This Carbon Reduction Plan has been reviewed and signed off by the board of directors (or equivalent management body).

Signed on behalf of the Supplier:

A handwritten signature in dark ink, appearing to be "J. Smith", written over a dotted line.

Date: 04/10/2021

¹ <https://ghgprotocol.org/corporate-standard>

² <https://www.gov.uk/government/collections/government-conversion-factors-for-company-reporting>

³ <https://ghgprotocol.org/standards/scope-3-standard>